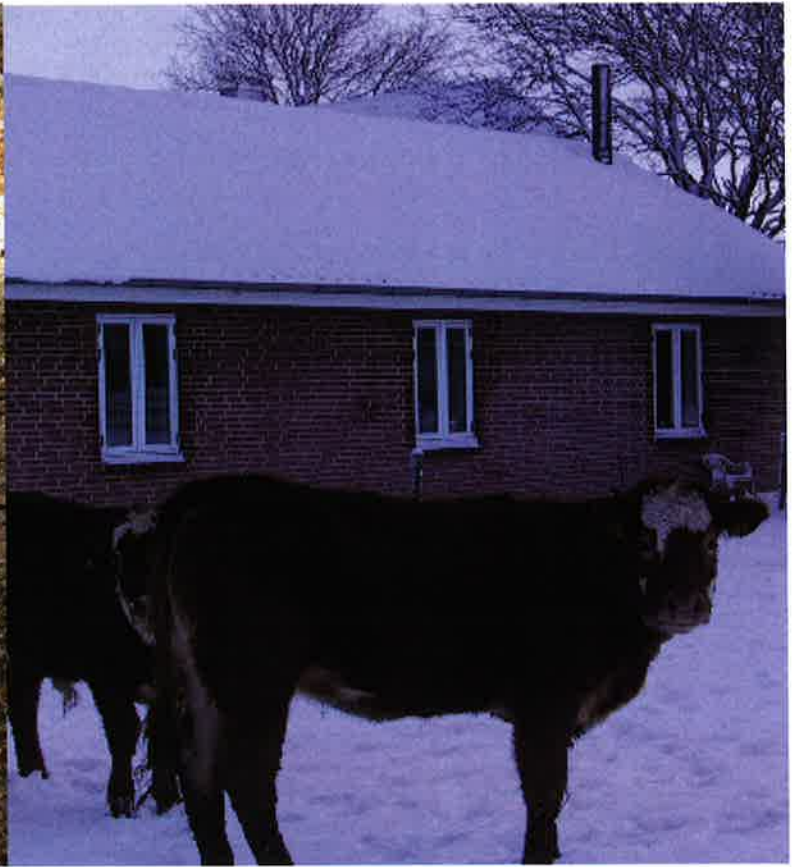


FROSTLINE®

FROST- PROOF AUTOMATIC DRINKING SYSTEM FRESH WATER SUPPLY FOR HORSES - ALL YEAR ROUND WITHOUT THE USE OF ELECTRICITY



www.frostline.dk

FROST-PROOF AUTOMATIC DRINKING SYSTEM FOR CATTLE

The automatic drinking systems are particularly suitable for corrals and open fields or for open stable facilities. The bowls are easy to operate, and the cattle quickly learn that it is more comfortable to push with the root of their noses rather than with their muzzles. When the muzzle is free for drinking, the cattle will drink naturally with its muzzle in the water surface. Therefore, we have chosen a bowl that is wide and deep to provide a good water surface to drink from.

The drinking system is fitted with a patented self-emptying sliding valve ensuring that the tap remains frost proof even at hard freezing temperatures. The seals can be replaced without digging up the well. Pull the system out of the well, dismantle the valve and change the seals (o-rings).

PRODUCT

Designation: Automatic drinking system A342 and A362.
 Supplied complete with well
 Tapping: D8mm supply nozzle
 Connection: ½" nipple pipe thread

INSTALLATION DIMENSIONS

	A342	A362
Height to bowl (H2):	400mm	600mm
Pipe stand height (H3):	460mm	660mm
Overall height (H1):	1360mm	1560mm
Well:	D200 x 900mm	D200 x 900mm

SHIPPING

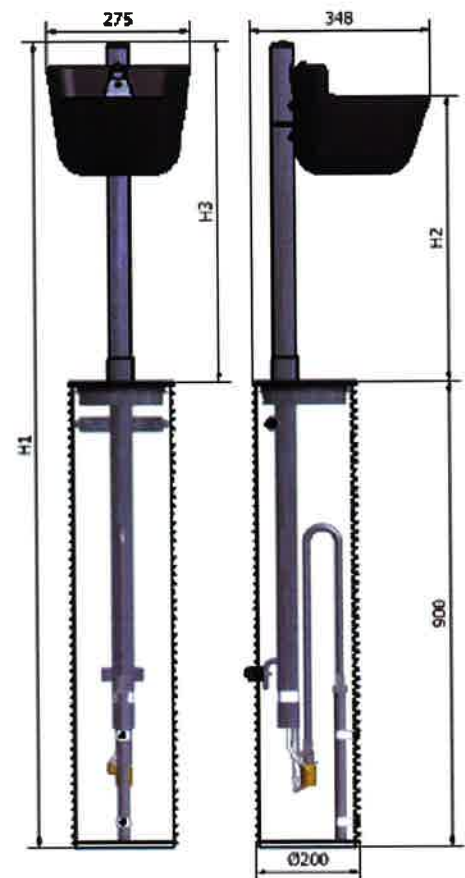
Dimensions, H-W-D: 1360 x 275 x 348mm/ 1560 x 275 x 348mm
 Weight: 8,0kg/ 8,5kg - complete with well

VALVE

FROSTLINE® self-emptying sliding valve
 Capacity: 9 l/min. at 2-4 bar
 connection pressure: 2-6 bar
 O-rings: NBR - 1 x D9x1,5 70sh, 2 x D6x1,5 70sh

MODELS

A342	69.48.91.340	Automatic Drinking System 40cm
A362	69.48.91.360	Automatic Drinking system 60cm



OPERATION OF THE VALVE

The system is provided with a 3-way self-emptying sliding valve. When the system is not in use, the valve and riser pipe are emptied of water that might otherwise freeze. The drinking system and thus the valve and riser pipe are frost-proof as long as the water supply line for the system is at frost-free depth.

RECOMMENDATION

An automatic drinking system can provide fresh, cool drinking water all year round for 10-12 cattle but we recommend installation of two systems with a minimum distance of 5 meters between the two, when more than one is to be served in order to secure that all cattle have access to the water. This means that the two systems can serve a total of 20-24 cattle.

